

"Encourage and thank the ones who use their voices - you know what's needed"

WELCOMING MESSAGE
- Elder Aggie and Shlomish -

we Raise
our hands
TO YOU

we thank
CAT's FOR
THE WORK
YOU DO.

SECHLT HAD AN INHALATION SITE BUT NO LONGER
SO VISITS ARE DROPPING

SOLUTIONS

Tents
Can be challenging
in the winter
Hoping for a tent



CAN BE COST
EFFECTIVE

Learn from
other industries
(MANAGING SILICA DUST)

PEOPLE NEED
HOUSING &
SUPPORT
WHEN THEY
COME OUT
OF DETOX

NEED
EQUITABLE
access across the province

HOW TO ACCESS
THESE SERVICES IN
THE NORTH

Peers & Elders
ARE IMPORTANT FOR THIS
Setting up sites in the region
We need an OPS

THERE'S
NO REASON
why you can't
FIND THE
LAND

new ideas

NELSON



There are 2 safe
injection sites
BUT NO INHALATION
SITES

IT'S A BIG AREA
We send
someone
on bike
to see
where we
should focus

WORK
SAFE
BC

IT'S DIFFICULT
TO MANAGE VENTILATION
and employee safety



SAFE
SOCIALIZE

SUPPORTIVE
FRIENDLY

FIELD TRIPS
TO LEARN
from other

Working on getting
a tent

BREAK STIGMA BY PERSONALIZING
Talk to leaders

Put a name to
THE FACE

Connect with
• NEIGHBOURS
• HEALTH AUTHORITY
• POLITICIANS

ATIRA-Vancouver



OVERDOSE PREVENTION SITES SAFE INHALATION

most deaths
ARE THROUGH
THE SMOKING
OF DRUGS → OVER HALF

for:
CATS
Cat knowledge
Exchange

ANTI-STIGMA : CAT KNOWLEDGE EXCHANGE

STIGMA from INDIVIDUALS

Results in not being able to get SUPPORT, distrust in health care, poor health + death, self worth affected, lack of DIGNITY + CARE

STIGMA from ORGANIZATIONS + SOCIETY

Results in HOMELESSNESS; discrimination in HEALTH CARE; bad treatment by POLICE + excessive FORCE; turned from SERVICES + STORES

PEOPLE JUDGE

BLAME + SHAME mean people don't get SUPPORTS...

ANTI-STIGMA GOALS:

DON'T USE ALONE

EMPATHY

REACH KEY GROUPS

PEERS LEAD THE WAY

WE ALL DESERVE RESPECT

CHANGE LAWS + POLICY

INCLUSION MESSAGING



BILLBOARD

TK'EMLÚPS to SECWÉPENC

EDUCATING REPORTERS STAY ON KEY MESSAGE



LANGLEY: reaching out to BUSINESS + COMMUNITY



NETWORKS:

designing HEALTH CARE SERVICES

SURVEYS

PEER VIDEOS

EQUIP PATHWAYS PROJECT VANCOUVER

KEEP UP MORALE

EVEN MORE CAT COLLABORATION + KNOWLEDGE BANK

AMPLIFY BILL C-216

PRIVATE MEMBER'S BILL

HIGH SCHOOL EDUCATION ABOUT STIGMA

SOCIAL MEDIA

CARING for YOURSELF FIRST

EVENTS

SAFE INJECTION BUS

PROMOTE CATS

JOIN THE CAT FB PAGE!

STORY WALKS

PWLE SHARING EXPERTISE

SAFE PLACES

CONNECTING CATS FOR PROJECTS

SO MANY OF THESE ISSUES are BIGGER THAN ONE CAT!

SAFER SUPPLY

CAT KNOWLEDGE EXCHANGE · MAY 2022

Minimize Toxic drug consumption by increasing SAFER substitutes.



RACISM
WAR ON DRUGS

We can use a PUBLIC HEALTH approach to DRUG POLICY

LED TO DEATHS + CRIMINALIZATION

Regulation Zoning Limits inspections + more
YES
not illegal markets
not PROFITS!

Rx PHS
FENTANYL POWDER ENHANCED ACCESS (EA)

costs are on par with illegal market
Safety features at a system level

CHOICE!

PHARMACY
TAKE HOME

\$10/point

YES TO PATIENTS PAYING FOR DRUGS

PEER DISTRIBUTION

mobile delivery

DISCUSSION

MORE EDUCATION + TRAINING

REGULATED and by more types of PROVIDERS COLLABORATION

INFORMED BY PWLE NEEDS

consistent doses

FENTANYL POWDER ENHANCED ACCESS

NELSON FENTANYL TASK FORCE

Erin Thomson, ANKORS

started safe supply at a homeless camp



SAFE SUPPLY SAVES LIVES

IDEAS

- Get OAT doctors on board
- anti-stigma work - for public and also so people come forward

more capacity

- Vending machine for meds
- daily support
- Choices for medications

"Safer supply should mean people not spending a whole day looking for drugs to FUNCTION"



\$15,000 PILOT!

Rx NEW prescriptions

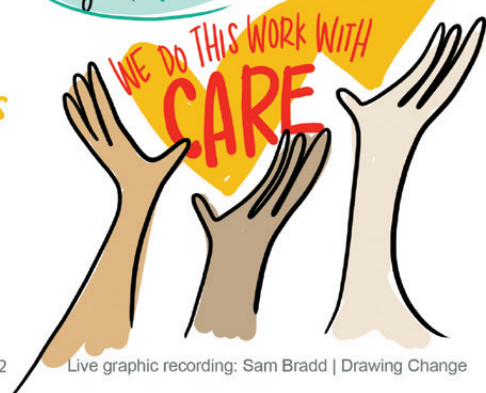
Outreach prescriptions
Connection

WE NEED:

- PEERS as NAVIGATORS
- PRESCRIBERS
- ATTENTION TO RURAL REMOTE AREAS
- DELIVERY
- FAST RESPONSES

- CULTURAL SAFETY LENS
- MEET PEOPLE WITH OPTIONS

LESS STIGMA IS DECOLONIZING WORK



WHAT MATTERS TO INDIGENOUS PARTNERS? CULTURALLY SAFE ENGAGEMENTS NEW IDEAS

RESOURCE

Culturally Safe Engagement: What Matters to Indigenous (First Nations, Métis and Inuit) Patient Partners? Companion Guide

Key Principles in Culturally Safe Engagement

TRAUMA INFORMED approach

Recruit INDIGENOUS OUTREACH WORKERS

Seats on our leadership table for Indigenous people



Listening TO INDIGENOUS MEMBERS

INTEGRATE CULTURAL ACTIVITIES + HEALING

"KEEP UP THE GOOD WORK"

Welcome + Prayer + Closing
Elder Aggie & Elder Shlomish

"THERE ARE SO MANY WONDERFUL TEACHINGS from our culture that can help"



WHAT DOES THE RELATIONSHIP LOOK LIKE

KANDU WEST KELOWNA

Gather Together EAT together

HAVE ELDERS PRESENT

"We're in survival mode"

BE MINDFUL OF LANGUAGE BEING USED

TECHNOLOGY IS A BARRIER

PATIENT PARTNERS

BRING IN OUR CULTURE

Anti-Racism

WHY INCLUDE INDIGENOUS VOICES

PROVIDE QUALITY CARE

Self DETERMINATION

FEEL SAFE

SUPPORT from ELDERS IS IMPORTANT

CULTURE HELPS RECOVERY

FULLY communicate

Need a PORT HARDY CAT

ENGAGE WITH ELDERS

HOLISTIC APPROACH to drug poisoning crisis

WORK CLOSELY WITH Local Indigenous Harm Reduction Team